



NEVER STOP ELEVATING
YOUR VET EXPERIENCE.

MYLAB™ VET PRODUCT LINE

MyLab™ SigmaVET **SO FAST, SO EASY**

Esaote's new MyLab™SigmaVET is the smart, portable solution that allows use of an ultrasound whenever a quick and complete diagnosis is required.



NEVER STOP ELEVATING YOUR VET EXPERIENCE.





MyLabSigmaTMVET



Dedicated VET software and probes



Windows® 10



Quick start-up



Full-screen visualization



Highly responsive capacitive touchscreen



Pivoting 15.6" monitor



2 probes connectors

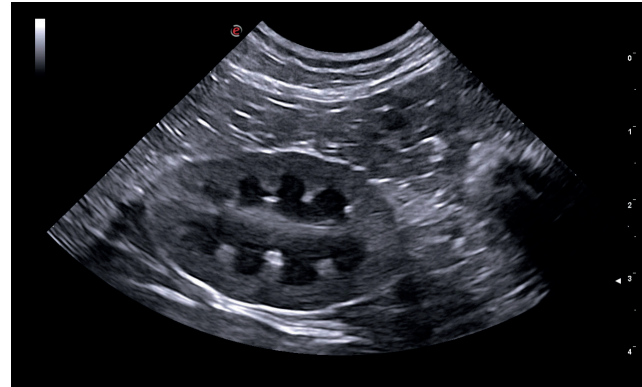


Easy to carry

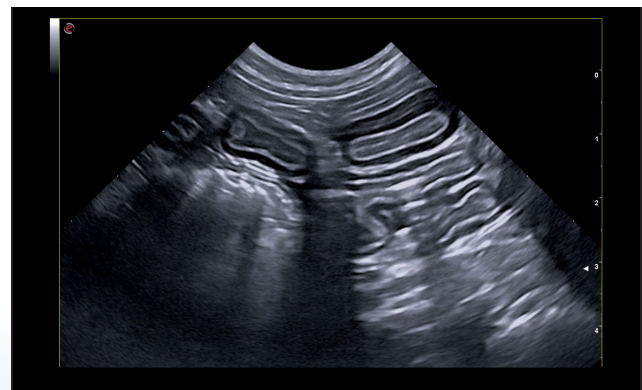


Esaote S.p.A. - sole-shareholder company
Via Enrico Melen 77, 16152 Genova, ITALY, Tel. +39 010 6547 1, Fax +39 010 6547 275, info@esaote.com

Windows® is a registered trademark of Microsoft Corporation. MyLab is a trademark of Esaote spa. Technology and features are system/configuration dependent. Specifications subject to change without notice. Information might refer to products or modalities not yet approved in all countries. Product images are for illustrative purposes only. For further details, please contact your Esaote sales representative.



Cat - Left kidney - B-Mode



Dog - IBD - B-Mode HD zoom

- **High-definition B-Mode:** new software and technology to enhance image quality and increase all diagnostic details
- **Single-probe approach:** with just one probe you can make a complete medical imaging examination and simplify your everyday practice
- **XStrain2D and AutoEF:** advanced, affordable cardiological tools which are one of a kind
- **Extensive connectivity:** advanced features allow sharing of ultrasound exams with others even on tablets and portable devices

160000184MA Ver.01

NEVER STOP ELEVATING YOUR VET EXPERIENCE.

