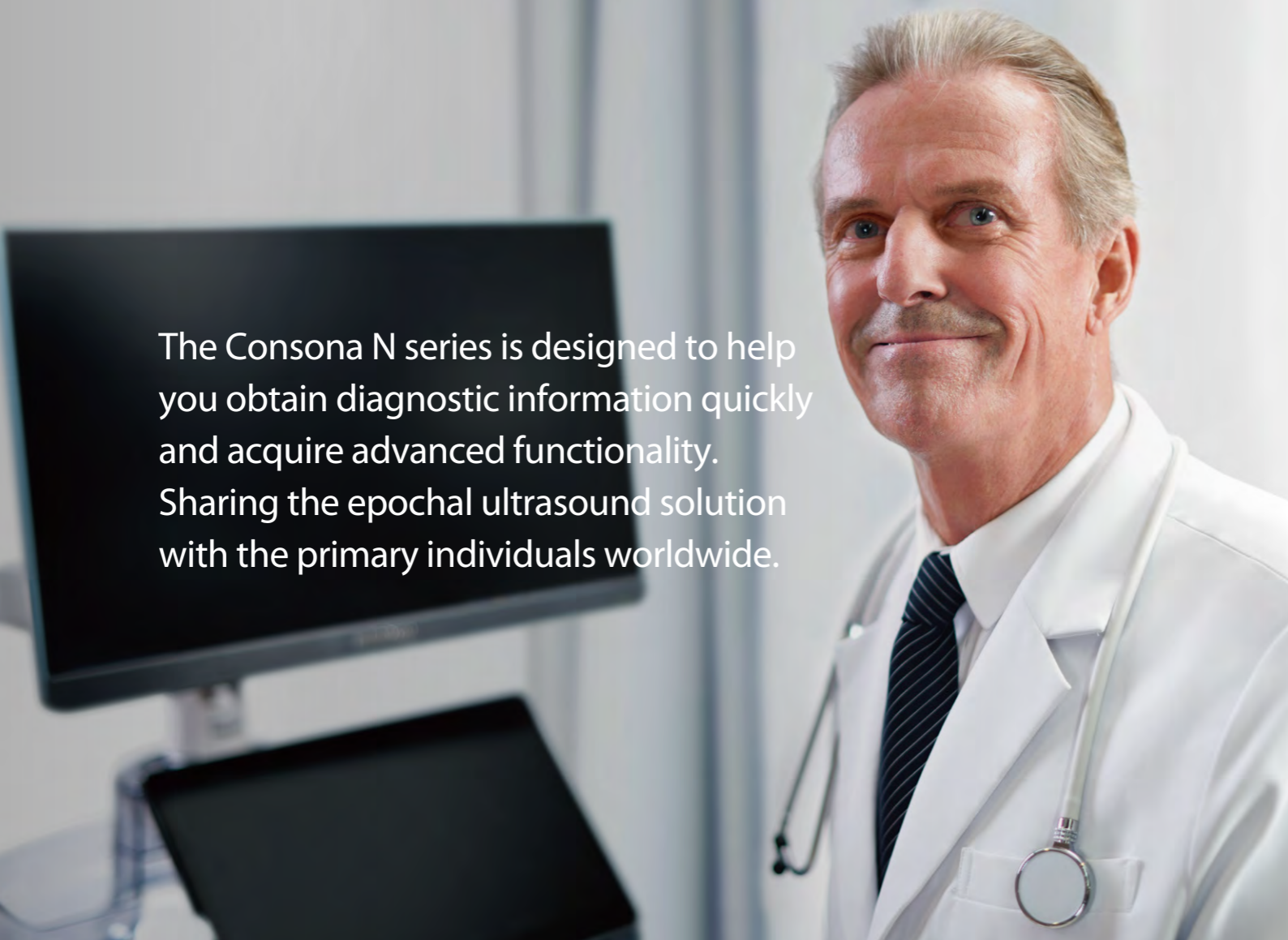


# Consona N9

Diagnostic Ultrasound System

## Concrete to Resonate





The Consona N series is designed to help you obtain diagnostic information quickly and acquire advanced functionality. Sharing the epochal ultrasound solution with the primary individuals worldwide.

## Transducer Family



- Single-Crystal transducers provide deeper penetration with details
- ComboWave transducers enhance imaging sensitivity
- Designed for comfortable gripping
- Wide clinical application coverage, supports more clinical scenarios

## Outstanding Technologies



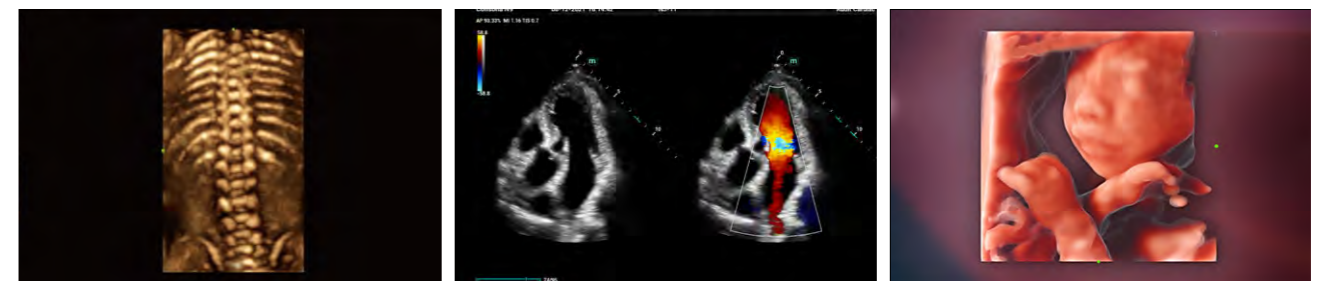
## Image Gallery



Normal Liver

Kidney with HR Flow

CCA Duplex



Fetal Spine

Adult Heart CDI

Fetal 3D with iLive

# Confident

## Excellent Image Platform

The ZST+ platform is an extraordinary innovation, representing an ultrasound evolution. Transforming ultrasound metrics from conventional beam-forming to channel data based processing. It delivers exceptional image quality for infinite imaging solutions with non-stop improvements.





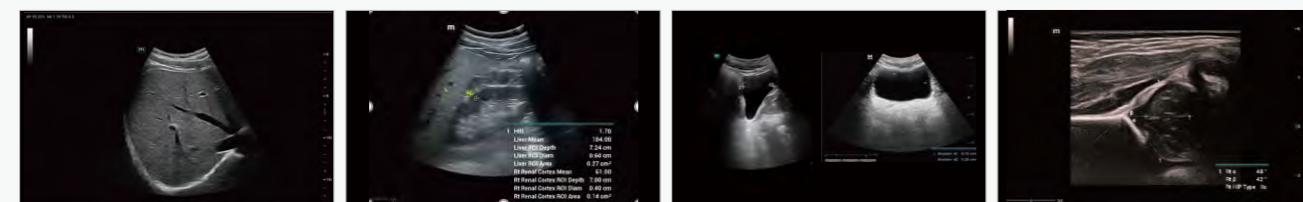
# Convenient

## Comprehensive Clinical Solution

Dedicated to deliver more substantial value in each specific application scenario

## General Imaging Solution

Smart tools for smooth diagnosis

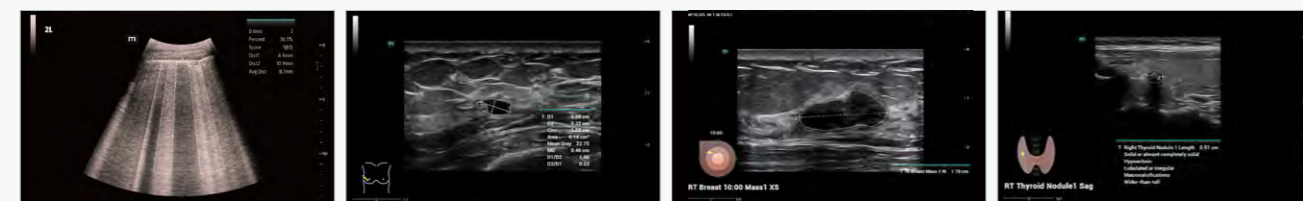


**iTouch+**  
Real-time dynamic image optimization

**Smart HRI**  
Auto recognition of liver and renal cortex and calculate brightness ratio

**Smart Bladder**  
Auto measure three diameters and calculate the bladder volume

**Smart Hip**  
Auto measure a/b angles of hip joint for easy Grap classification



**Smart B-line**  
Automatic B-line recognition and numbers counting

**Smart Calc**  
Automatic trace, measurement and calculation tool

**Smart Breast**  
Smart and accurate breast lesion diagnosis based on ACR BI-RADS

**Smart Thyroid**  
Smart and accurate thyroid nodule diagnosis based on ACR TI-RADS.

## Obstetrics & Gynecology Solution

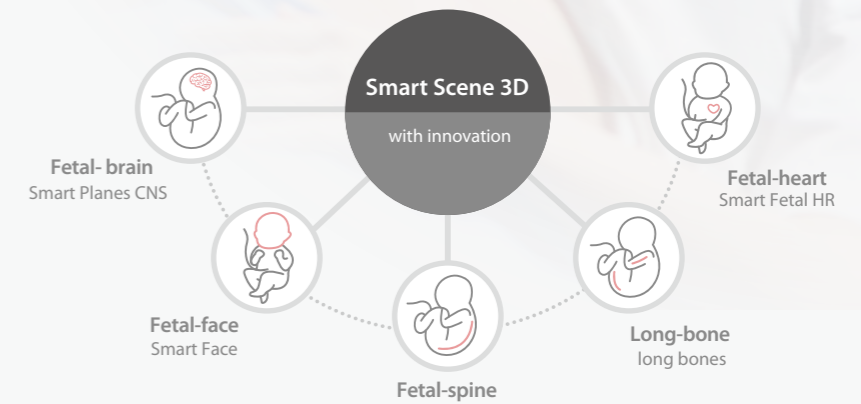
Full-stack smartness solution based on Smart Scene 3D

### Smart Scene 3D

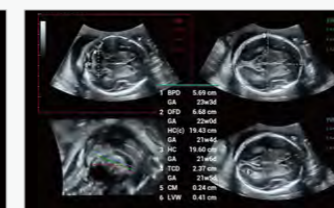
Full-stack smartness obstetric solution empowered by ZST+



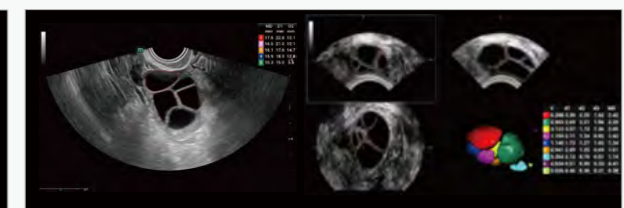
**Smart Face**  
One button removal of fetal face occlusions



**Smart OB**  
Automated fetal biometrics measurement



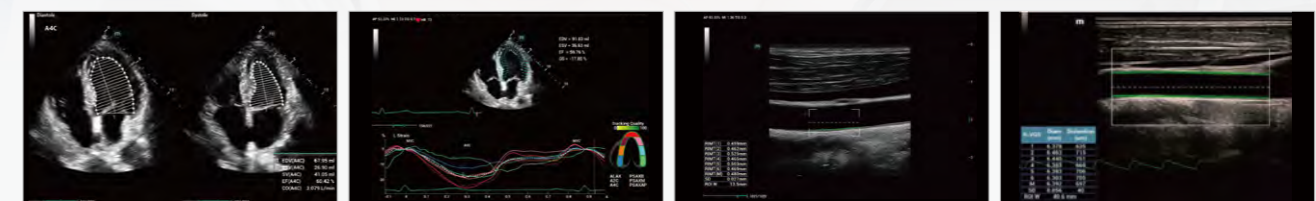
**Smart Planes CNS**  
Extremely smart fetal CNS study tool



**Smart FLC 2D / 3D**  
Automatic detection of follicles' number and volume calculation

## Cardiovascular Solution

Effective cardiovascular evaluation



**Auto EF**  
Easy measurements of cardiac function

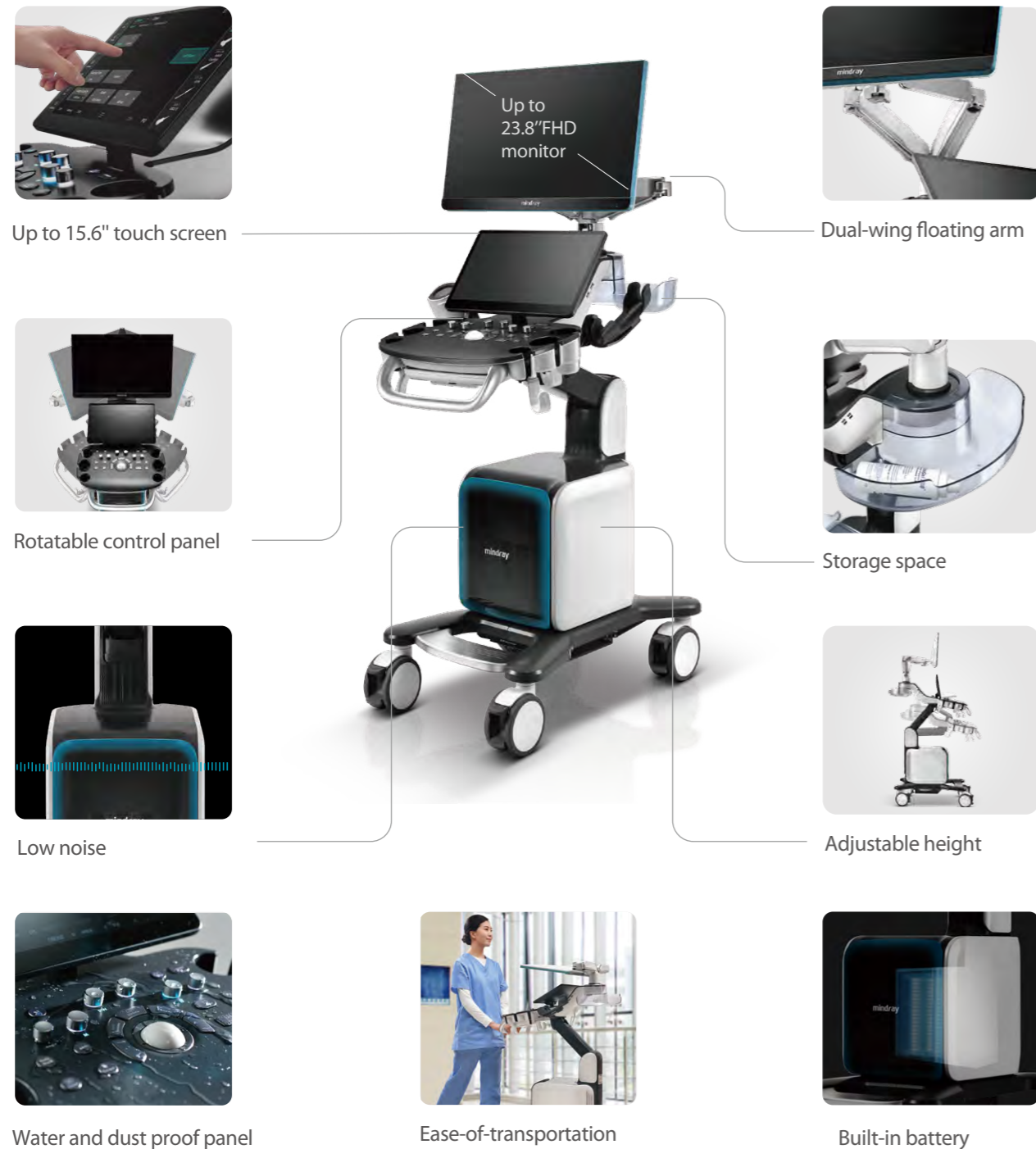
**TTQA**  
Angle-independent tissue tracking for precise evaluation of myocardial movement

**RIMT**  
Automatic and extremely accurate IMT measurement

**R-VQS**  
Vascular hardness coefficient & Pulse wave velocity (PWV)

## Ergonomic Design

Boosts the daily work efficiency. Exquisite machine design brings users better operating experience



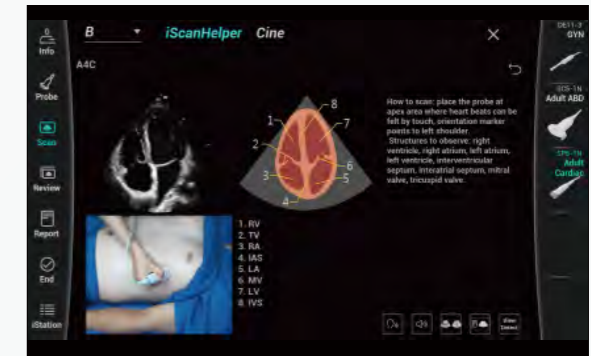
## Conductive

Inspires the growth by every progressive step

Shortened learning curve with effective professional improvement

### iScanHelper

A scanning tool to practice skills by following the guidance step by step



### iWorks

A standardized protocol, scanning step by step without plane omission



### Smart Vue

Auto recognition on standard plane, and restore the standard plane automatically

