

MyLab™ X90

Premium Ultrasound
with Augmented Insight™



NEVER STOP SEEING THE UNSEEN.



When research is oriented towards the evolution of products and solutions for the continuous improvement of diagnosis in terms of imaging and workflow, when research is focused on expanding technological potential and exploring unexplored horizons, the result is pure innovation.



EXPLORING THE INSIDE.





Experience Intelligent Imaging

A simple image can **make the difference** in treating your patients; Esaote is therefore committed now more than ever to providing you with the **ultimate technologies** in ultrasound imaging. MyLab™X90 is Esaote's premium ultrasound platform, designed to deliver **outstanding image quality** and advanced clinical solutions. Bridging the clinical information and an **A.I.-driven** workflow for the first time, with MyLab™X90, you will experience your first Intelligent Imaging ultrasound device.



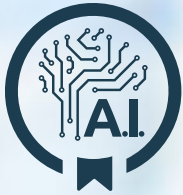
ULTIMATE
DESIGN



XCRYSTAL
TECHNOLOGY



CLEARWAVE
ARCHITECTURE



AUGMENTED
INSIGHT™



CLINICAL
EXPERIENCE

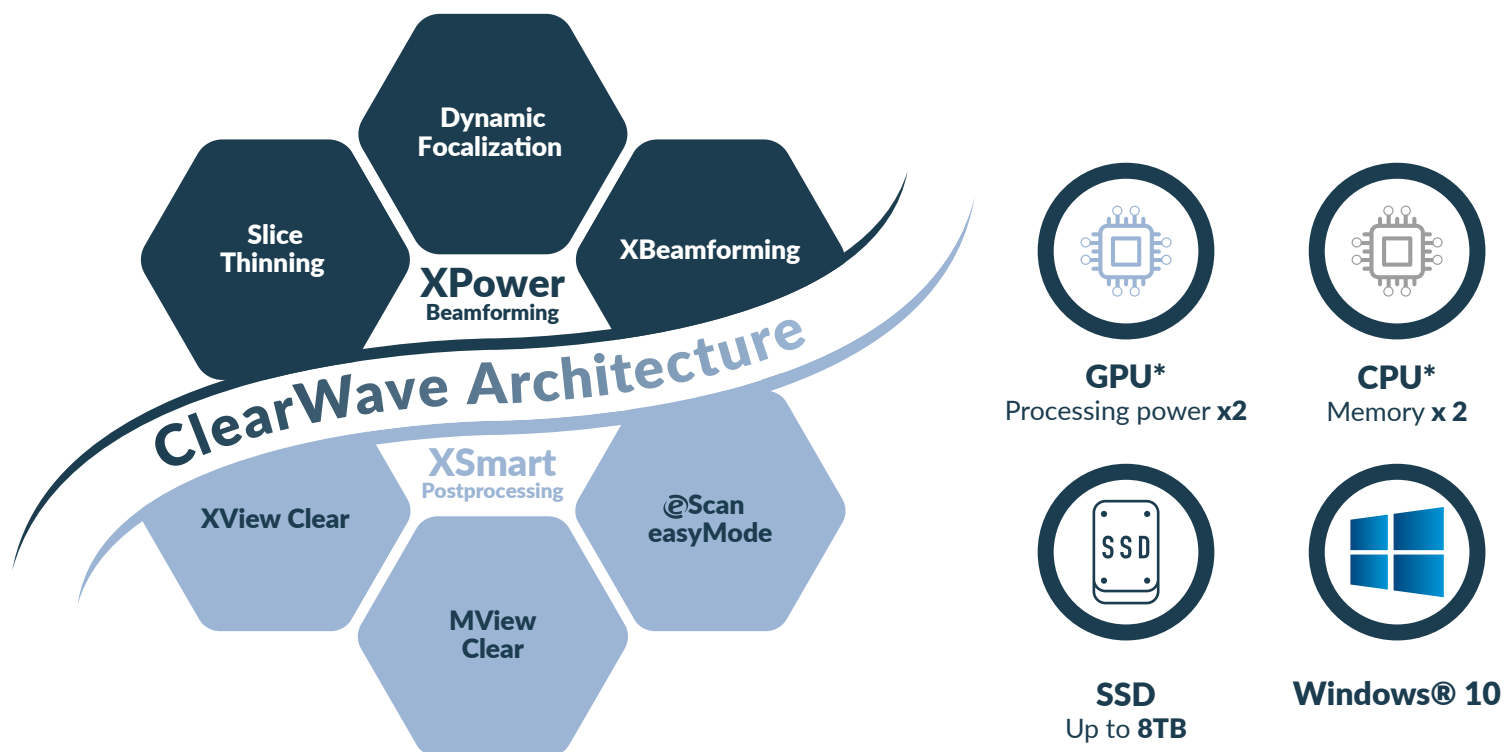


ClearWave Architecture

ClearWave Architecture is the aggregation of the two components in image construction – Esaote's ultimate **XPower Beamforming** and **XSmart Postprocessing** technologies – to deliver a new standard in terms of image quality.

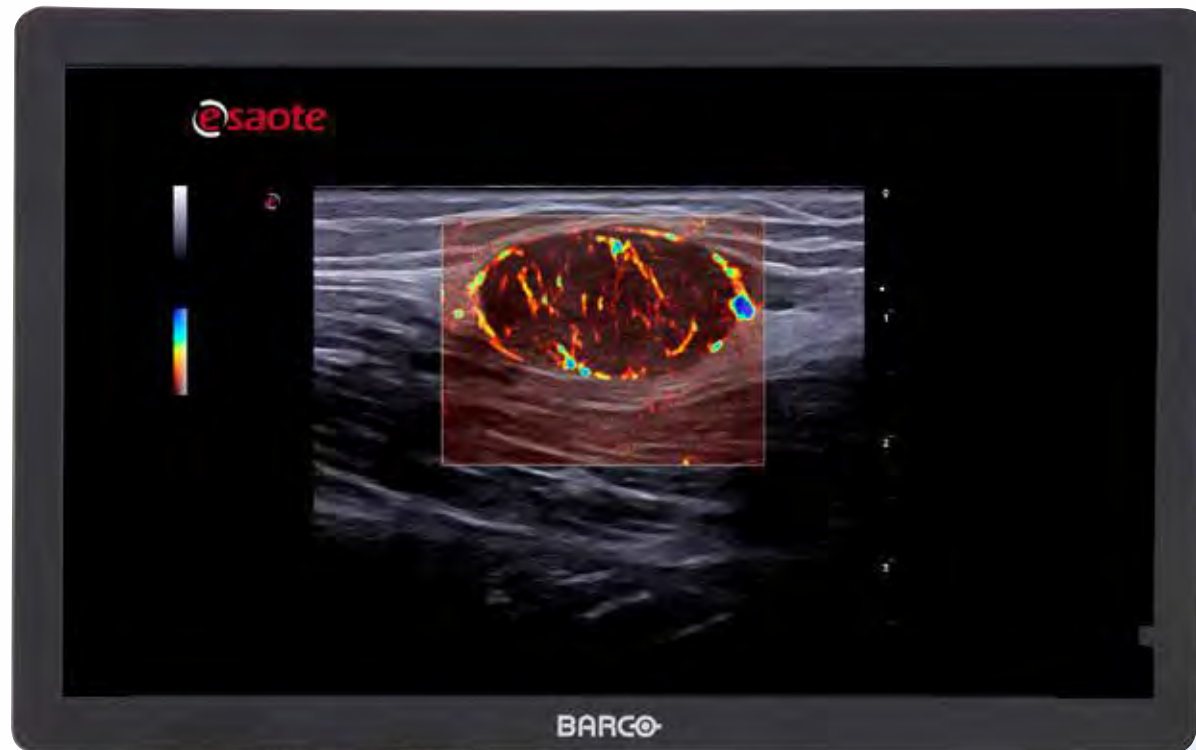
Embedding the latest generation of electronics and processors, MyLab™ X90 is designed to face the new challenges of imaging stream management and authorizes connectivity with extreme security.

Providing a high level of protection against external threats, **Windows® 10** enables data transfer, offers peace of mind in compliance with the GDPR and ensures the safety of patient data, while the power of the MyLab™ X90 **GPU** speeds up the transfer rate by up to four times, facilitating the multimodality approach and the use of live streaming.



* Compared to the previous line

Top-class medical imaging visualization



@Led monitor

- 23.8" Full HD High Dynamic Range Monitor
- Dual-Layer technology
- Contrast resolution ratio x 40*
- Higher sensitivity in brightness and color
- Long lifespan and stability

Collaborating with **Barco** to equip its **premium platform**, Esaote demonstrates its product to be of the utmost quality.

MyLab™X90 embeds an exclusive **@Led monitor** developed by Barco and optimised for this platform.

Dual-Layer LCD technology, the top-class in terms of picture rendering, offers brilliant colors, infinite contrast, fast response rate and viewing angles with higher stability over time.

*compared to conventional LCD technology

High-tech design, maximum comfort



New workflow gestures

With its extensive touchscreen, MyLab™X90 is setting a new standard for workflow in ultrasound platform management, enabling **intuitive real-time** control of several parameters such as **depth, zoom, sample gate, replay of cineloop** or even certain measurements using only your fingers.



Optimal working environment

As a premium platform, MyLab™X90 embeds an exclusive **light sensor** for automatic optimization of brightness to the scanning environment, while the **Opti-Light** feature is backlit for real-time lighting, providing invaluable comfort in everyday use, depending on conditions in the scanning room.



Customizable workstation

MyLab™X90 has been designed for all expectations in terms of ergonomics.

Different sizes of probe holders are available to fit the endocavity and convex or linear probes can be placed on two lateral rails.

An **integrated gel warmer** can be added to the rail with the choice of two temperature settings to improve patient comfort.

The **high-quality articulating arm** and its friction mechanism offer the option of lifting the monitor easily, keeping it in the optimum position chosen, and locking it during transportation.



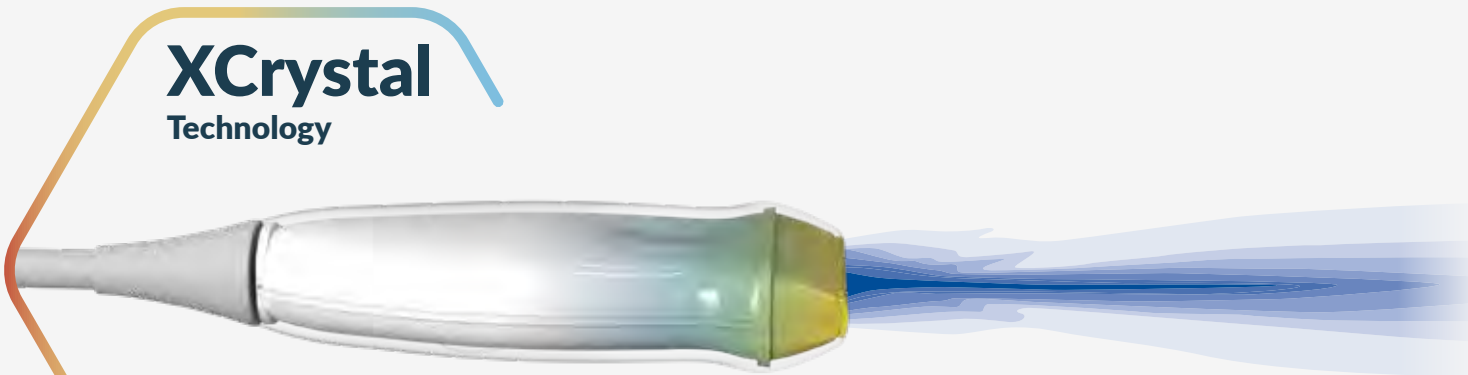
XCrystal Technology, micro-slice imaging

Esaote-developed **XCrystal technology** dramatically increases **sensitivity** and **penetration**, to provide sharper images and **homogeneity**.

Esaote, indeed a benchmark for high-performance probe manufacturing, has designed a new generation of transducers to channel the **ClearWave Architecture** supported by MyLab™X90, and to deliver top-class resolution imaging. The ergonomic shape designed by Esaote engineering provides **true comfort** in everyday use.



Conventional probe technology



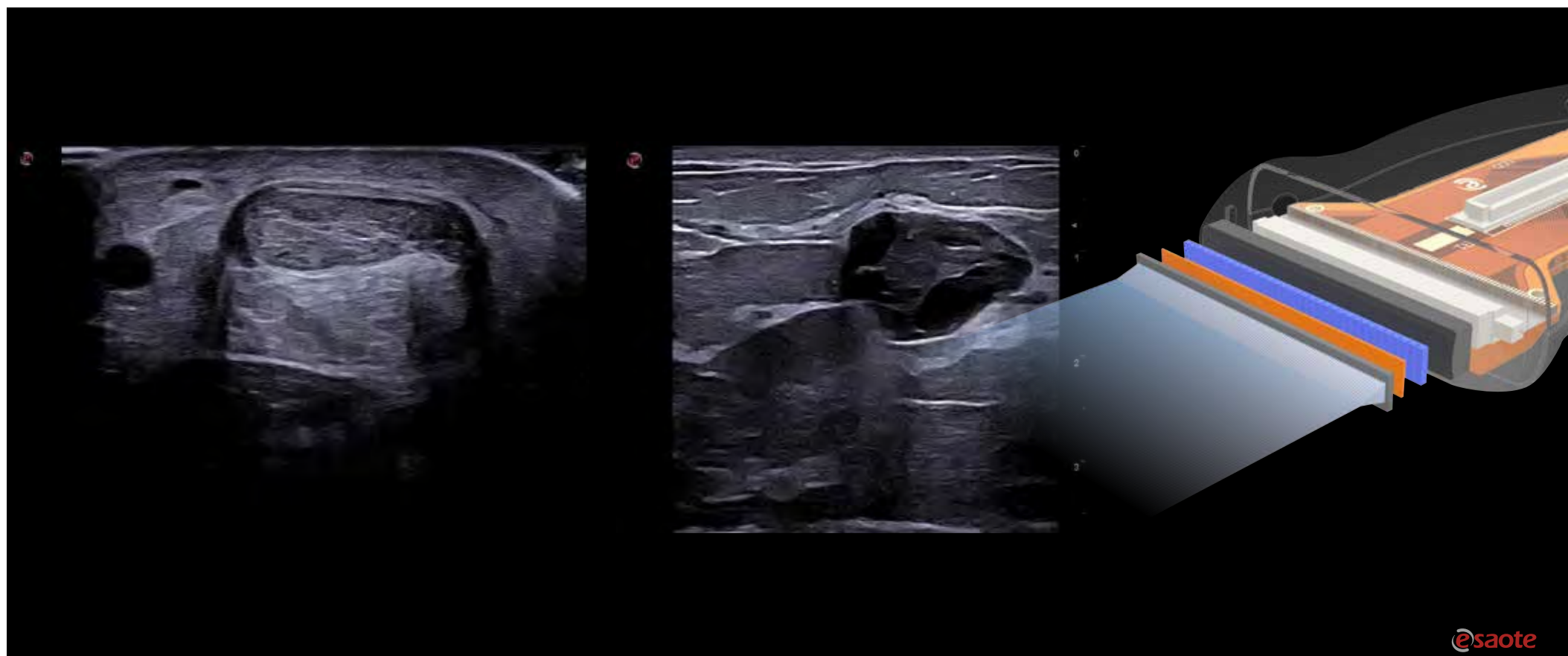
XCrystal
Technology

Lens shape
Thermal drain mechanism
HD elements/multi-layer matrix structure



Towards excellence in very superficial imaging

A genuine technological breakthrough in very superficial explorations, the **LMX 4-20**, Esaote's brand-new **HD Single Crystal** probe, combined with ClearWave Architecture, benefits of very wide bandwidth and operating frequencies up to 25MHz. It reveals unprecedented clarity in the smallest details without compromising the deeper areas.





Augmented Insight™: Esaote intelligent solutions

Augmented Insight™ embeds all the solutions powered by Artificial Intelligence, developed by the Research & Development department at Esaote according to a multidisciplinary approach, across different modalities such as Ultrasound, MRI and Ebit.

Based on data-driven machine learning, **Augmented Insight™** is designed to simplify the workflow in repetitive gestures, complex procedures, measurements or lesions analysis.

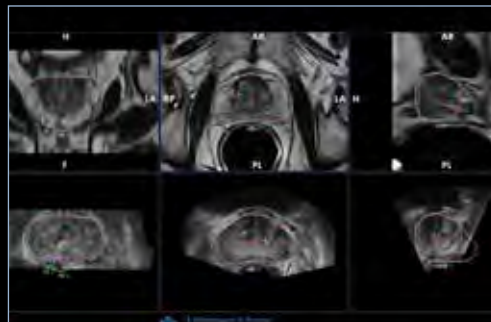


@ Detect



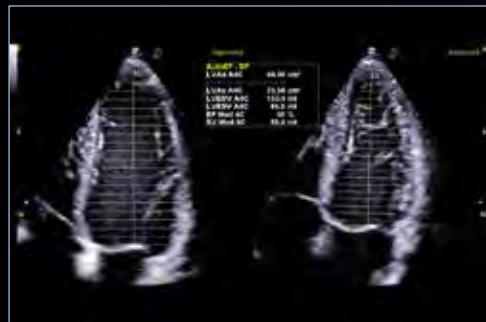
Automatic contouring of thyroid and breast lesions in suspicious areas suggested (ROI) by the physicians

UroFusion



Automatic segmentation of the prostate MRI/US, followed by autoregistration of both modalities for targeted biopsies

AutoEF



Automatic Ejection fraction assessment of the left ventricle

AutoOB



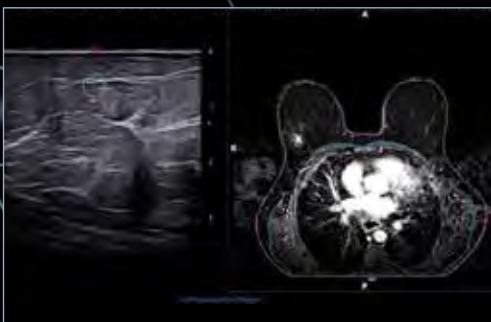
Automatic proposals for fetal biometric measurements

Breast Mass Analyser



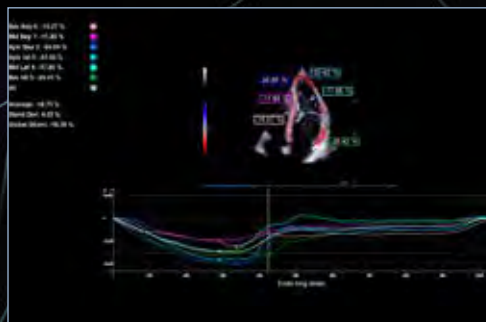
BMA: Automatic proposal of breast lesion classification, inside a region of clinical interest (ROI)

BreastNav™ MRI



Automatic segmentation of the breast MRI and real-time fusion based on an adaptive 3D model

XStrain™ LV

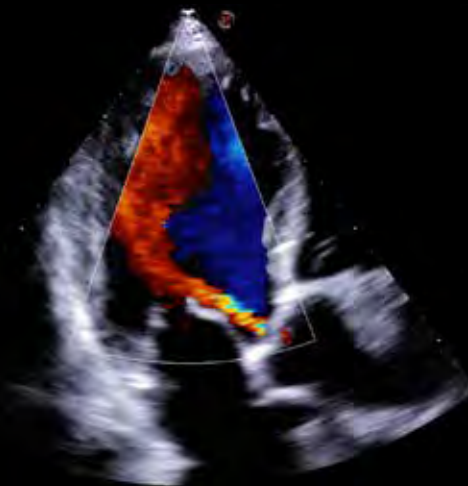
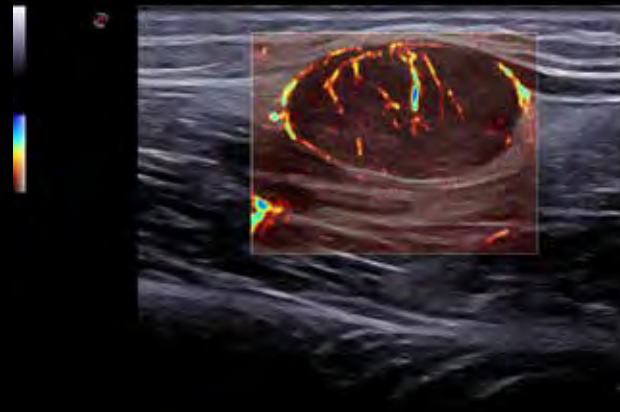
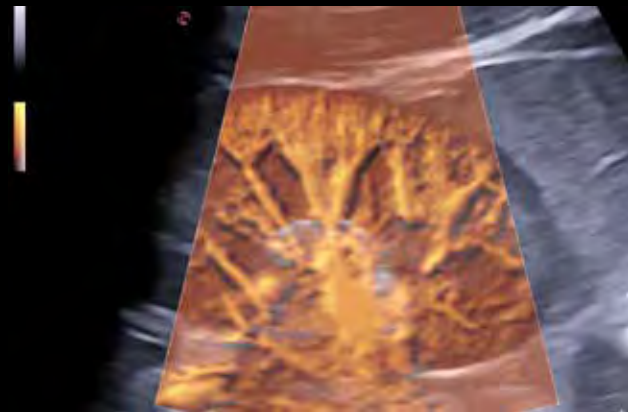


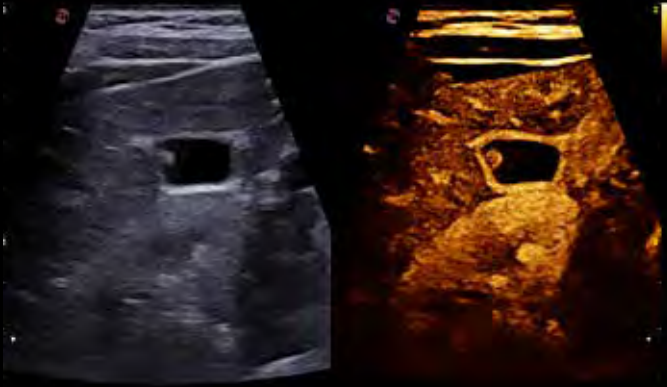
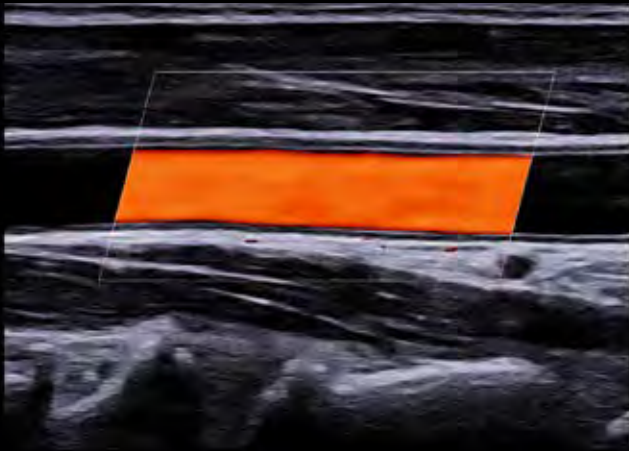
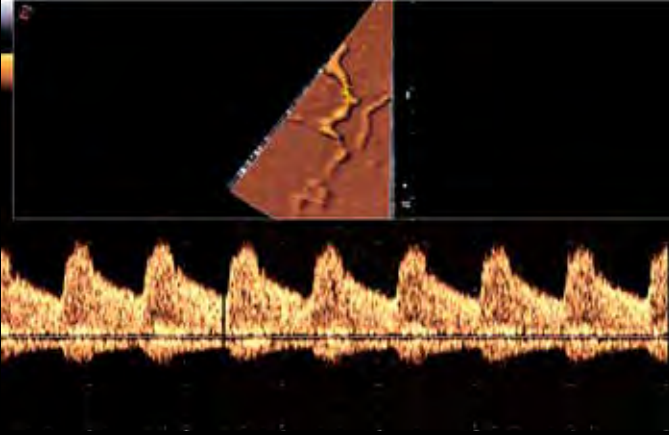
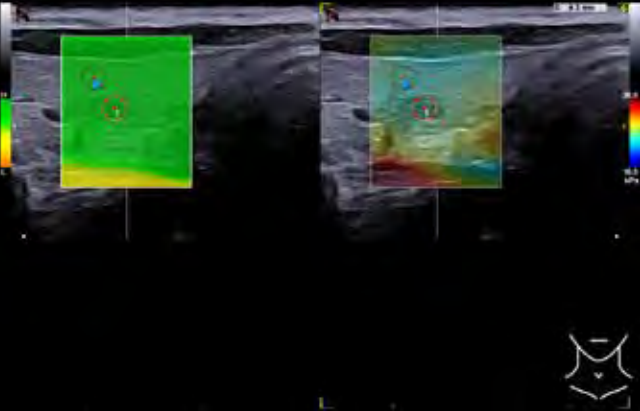
Automatic assessment of global longitudinal strain in the left ventricle

Automatic Plan recognition



Automatic biometric plan recognition for fetal measurements





Diffuse liver disease assessment

MyLab™X90 offers a comprehensive multiparametric package for diffuse liver disease assessment. Esaote's **QAI** (Quantification Attenuation Imaging) technology provides mapping and quantification of the attenuation along the liver depth, to evaluate hepatic steatosis, completing the stiffness evaluation provided by **QElaXto 2D**, sophisticated Esaote shearwave elastosonography software with adjustable rejection tool and dispersion map visualization. Data are automatically summarized in a report, to support diagnosis and easy follow-up.



Early detection to therapy for liver lesions

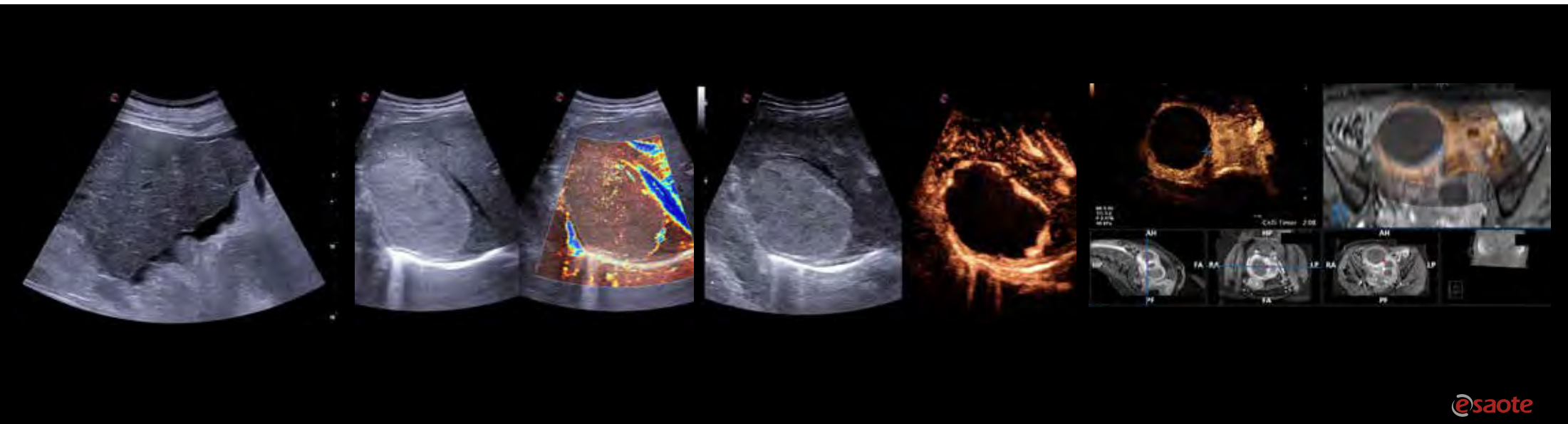
To leverage the detection and characterization of suspect lesions, Esaote's Liver Package supports homogenous first-class-quality images through a wide selection of probes, enhancing details with sharpness and clarity even in challenging patients, while the evolution of **microV** technology takes advantage of its sensitivity with a higher frame rate and provides an outstanding visualization of the lowest flows.

MyLab™X90 offers a panel of advanced tools for deeper examinations, to provide you with further information on complex clinical cases.

CnTI™ Clear, the latest implementation of Esaote's Contrast Enhanced Ultrasound technology, increases performance via considerable persistency of contrast media and improves coverage of the deepest areas with information for liver tissue microperfusion.

Supporting interventional procedures, **Virtual Navigator** enables easy fusion imaging via an ultra-simplified workflow that includes all the advanced tools such as automatic registration, breathing and movement compensation and needle tracking.

MyLab™X90



Detail imaging as a new benchmark in musculoskeletal imaging

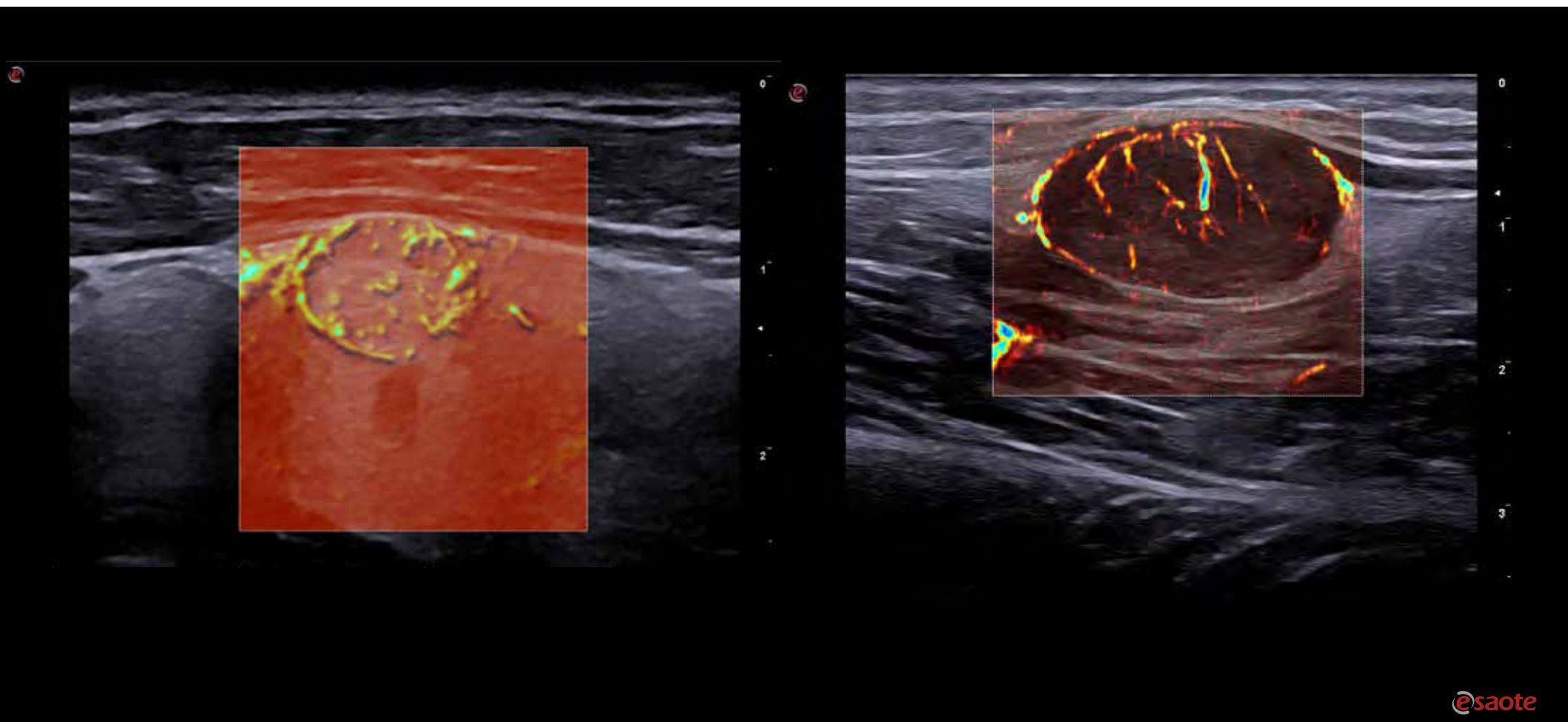
As an historic specialist in high-frequency probe manufacturing, Esaote offers a broad portfolio of transducers to cover all clinical needs in superficial examinations.

Thanks to **XCystal** array technology, MyLab™X90 provides an **unparalleled level** of detail imaging, from the **ultra-near-field** to **deeper areas**.



No limits to the visualization of microvascularization

Esaote pushes the limits of **microvascularization imaging** one step further, with the latest implementation of microV technology to detect the **minutest flow**, bringing precious clinical value in the early detection, diagnosis and follow-up of musculoskeletal injuries or lesions characterization.



Early detection in breast imaging, supported by A.I. solutions

Driven by **Artificial Intelligence**, Esaote's solutions in breast ultrasound imaging open new horizons in early detection and second-look examinations. **Breast Mass Analyser** combined with **@Detect** technologies, both powered by A.I., increase the speed and consistency of lesion segmentation and help to provide reliable evaluation of the suspected areas.

BreastNav™ & **BreastNav™ MRI** offer the full breast package for a multimodality approach in one of the most mobile and variable organs in the human body, giving real-time feedback on the scanned area, for easy follow-up on a specific target. In particular, BreastNav™ MRI – based on **3D-modeled A.I. technology** – offers fusion imaging between prone MRI and supine US, where A.I. also provides automatic support for MRI breast segmentation.

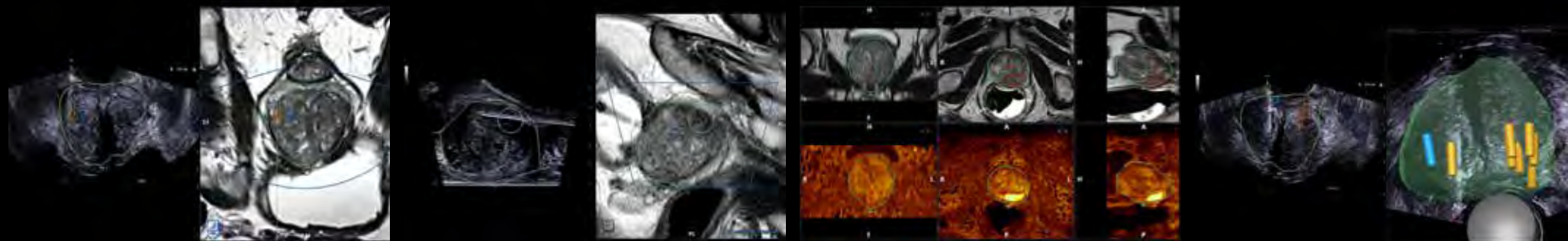


New standards in urology supported by A.I. workflow

Esaote offers a complete package of dedicated tools to suit all your needs in urology, either in the screening or interventional phases.

MyLab™X90 embeds UroFusion, Esaote's ultimate **A.I.-driven** workflow solution for prostate navigation. Simplifying fusion at a level never reached before, UroFusion enables the automatic segmentation of the US and MRI prostate data to offer automatic registration, facilitating the procedure and increasing your confidence.

UroFusion, available for both transperineal and transrectal approaches, enables the combination of multiple series to easily spot the targets and is compatible with all other advanced modalities, including sample mapping, **microV**, **CnTI™** and **QElaXto 2D**.



MyLab™ X90 embeds **3D flow representation**, via **BrightFlow** technology and an A.I.-powered automatic plane recognition algorithm, which is combined with the **AutoOB** package to facilitate the workflow in fetal biometric measurements.

For advanced examinations, MyLab™ X90 offers a complete solution in 3D/4D, both in obstetrics and gynecology, to provide volumetric representations.



Feto A
EPW: — g
GA (LMP): 3366g
Ventr L — mm
BPD 81.6 mm
GA 3256G RG % 10.3
HC 304.0 mm
GA 3356G RG % 14.8

Contiguu	
Volume0a	1.6 ml
Volume0b	2.2 ml
Volume0c	2.7 ml
Volume0d	4.6 ml
Volume0e	3.4 ml
Volume0f	0.993 ml
Volume0g	1.8 ml

@Streaming, for secure sharing of live scans

Either for education purposes such as collaborative and application and training sessions, @Streaming technology offers real-time streaming of ultrasound, together with picture-in-picture camera on your tablet, phone or laptop.



Customer Care

yrs **3**



3-year service coverage



REMOTE
TECHNICAL
SUPPORT



PROBE
COVERAGE

Conditions for service coverage may vary depending on your country.