

## TE Air App: Brings professional ultrasound on your smart device



- Easy-to-use with an intuitive user interface
- Enhances efficiency with one-handed operation
- Offers patient data management solutions
- Completes your workflow through seamless interconnectivity with your information system

## Ready to go for a full day



**Air Capsule:**

- A protective case that also functions as a portable charger
- Supports wireless charging
- Powers TE Air for the entire day when fully charged



**Minimized downtime:**

Charges TE Air from 0% to 90% in just 35 minutes

**Effective infection control:**

- IP68-rated for waterproof and dustproof protection, allowing for full immersion during high-level disinfection
- Entirely enclosed by a sterile cover to avoid contamination

## TE Air e5M

Wireless Handheld Ultrasound System

## Innovation, Untethered



With its portability, affordability, ease of use, and high efficiency, this handheld ultrasound system allows for rapid diagnosis and treatment and helps to improve patient outcomes.

By integrating multiple applications, TE Air e5M caters to whole-body scanning and adapts to various clinical scenarios. Its wireless design enables high-quality ultrasound exams anytime and anywhere. Beyond its versatility, TE Air e5M also provides a range of smart functions and tutorial tools to boost confidence and efficiency.



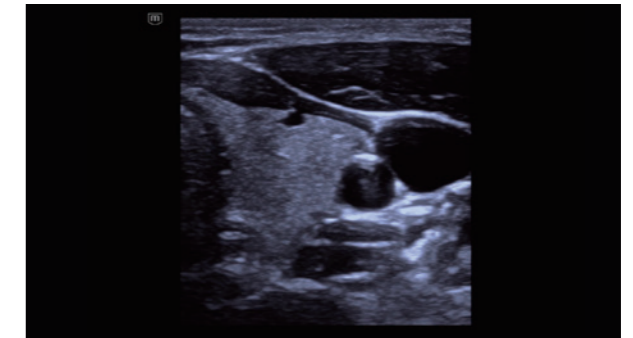
### Automatic image optimization

**iTouch+:** Adjust the setting to optimize image quality with a single click

Automatically detects the anatomy, switches between and optimizes presets for the liver, kidney, thyroid, and carotid, significantly reducing manual adjustments and making the scanning easier.



Gallbladder with iTouch+



Thyroid with iTouch+

### Whole-body scanning with confidence

- **20+ dedicated presets:** Abdomen, Small Organ, Vascular, Obstetrics, Gynecology, FAST, and more

- **Favorites at the top:** Frequently used presets are displayed at the top of the list to streamline your search

- **Various scanning modes:** B-mode, M-mode, Color Doppler, Power Doppler, and PW Doppler



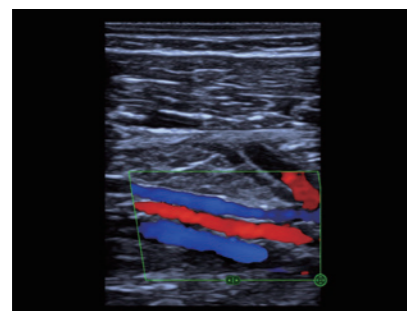
Liver



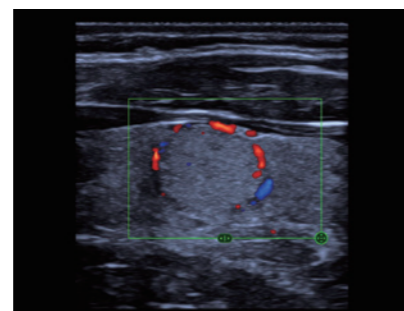
Kidney



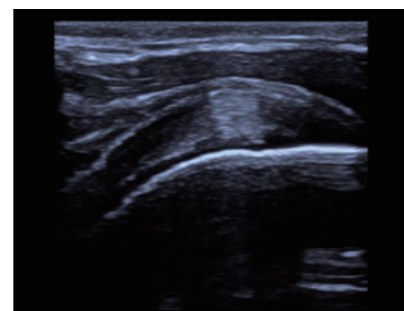
Fetus



Blood vessel



Thyroid



MSK

### Automatic measurements

- **Smart Bladder:** Automatically detects three bladder diameters and calculates bladder volume
- **Smart Calc:** Semi-automatically measures lesion diameter and area
- **PW Auto Calc:** Automatically traces and measures PW spectra, including PS, ED, TAMAX, TAMEAN, RI, PI, S/D, and HR

### Automatic workflow

- **iWorks:** Standardizes and simplifies the workflow, allowing a full set of scans to be finished by simply following the guidelines

### Support that goes the extra mile

- **iScanHelper:** An integrated tutorial tool Provides easy-to-follow guidance on ultrasound scanning with anatomical illustrations, standard images, reference pictures, and practical tips for effective scanning
- **Remote Help:** Mindray's collaboration solution Integrates Mico+ with the TE Air App to allow real-time sharing of ultrasound exams, including images, audio, and video to the terminal device, for guidance, training, quality control, case discussions, and more

